

Single Glider Assembly Instructions



Thank you for purchasing your new Torrains Manufacturing Co.'s Lawn Glider. Assembly of the Glider can be accomplished by one person however, it is advised that you have a helper during a few of the assembly steps to lessen the chance of marring the powder coat finish.

Your chair seat and back **may not** resemble the pictures shown in these instructions. Instructions are for all styles of double gliders. Picture of assembled chair **may not** look like the style you have.

Working on a clean padded surface or a lawn is recommended. **Avoid concrete as your assembly area.**

DO NOT OVER TIGHTEN! THIS WILL RESULT IN BREAKING THE POWDERCOAT AND WILL VOID YOUR WARRANTY!

Occasionally, when opening your metal lawn furniture, you may encounter some slight discoloration. This and many other scuff marks can be easily removed with Chrome Polish and a soft cloth.

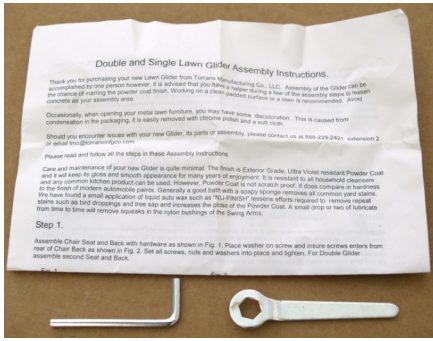
Please **CAREFULLY** read, understand and follow **ALL** the steps in these Assembly Instructions **AND Complete Each Step Before Moving On To The Next.**

Care and maintenance of your new Glider is quite minimal. The finish is Exterior Grade, Ultra Violet resistant Powder Coat and it will keep its gloss and smooth appearance for many years of enjoyment. It is resistant to all household cleansers and any common kitchen product can be used. However, Powder Coat is **NOT** scratch proof. It does compare in hardness to the finish of modern automobile paints.

Generally a good bath with a soapy sponge removes all common yard stains. We have found a small application of liquid auto wax such as "NU-FINISH" lessens efforts required to remove repeat stains such as bird droppings and tree sap and increases the gloss of the Powder Coat. A drop or two of lubricate from time to time will remove squeaks in the nylon bushings of the Swing Arms.

NOTE: When moving assembled Glider, grasp ***Main Frame*** and **NOT** ***Seat and Back Chair assembly of SINGLE Gliders.***

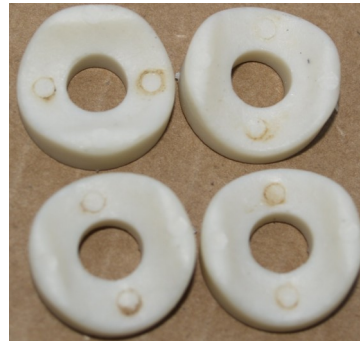
Single Glider Parts List



1 set of instructions with tools



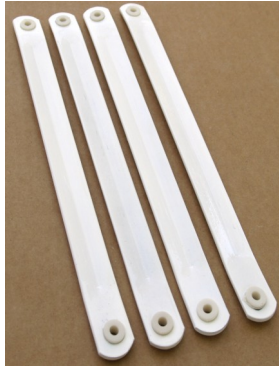
4 end caps



4 plastic spacers



4 acorn nuts



4 swing arms



2 side supports



4 short screws



SG-15 long screws



16 large washers



SG-38 small washers



**2 main frames
1 straight main frame crossmember**



19 lock nuts



"U" shaped chair frame crossmember



**Chair Back
1**



**Chair Seat
1**



2 chair frame arms

Step 1.

Assemble **Chair Seat** and **Back** with hardware as shown in **Fig. 1**. Place **WASHER** on **SCREW** and ensure screw enters from **REAR** of **CHAIR BACK** as shown in **Fig. 2**. Set **ALL** screws, nuts and washers into place and tighten.

Fig. 1

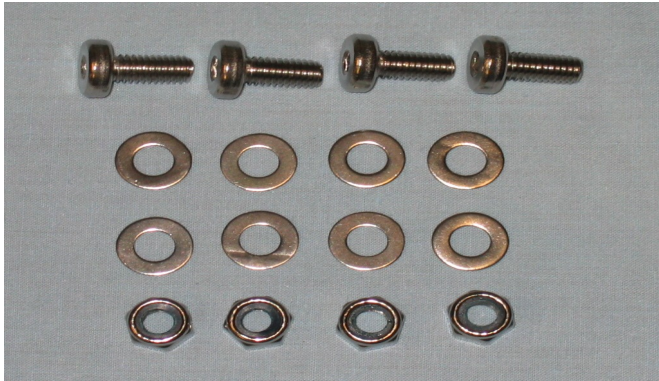


Fig. 2 AS VIEWED FROM CHAIR BACK



Step 2.

Locate two **main frame** parts and **straight main frame crossmember**. Insert **crossmember** with reduced ends into **main frame** as shown in **Fig. 3**. Align mounting holes and secure with **long screws**, **washers** and **nuts** as shown in **Fig. 4**. **TIGHTEN ALL SCREWS**. Place **plastic end caps** into each end of frame. Set assembly aside.

Fig. 3

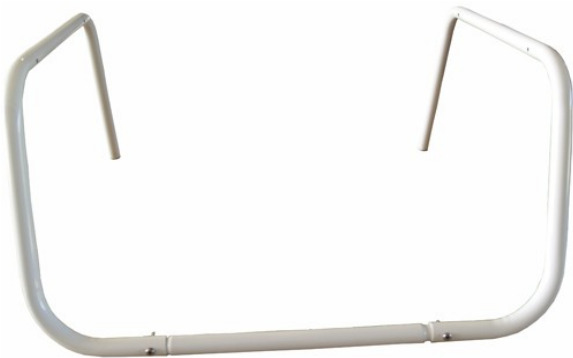


Fig. 4



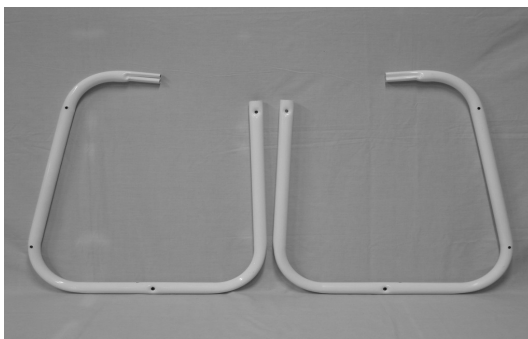
Step 3.

Locate both **chair frame arms** as shown in **Fig. 5**. Note dimples in frame parts **AT ROUND END ONLY** and ensure these dimples face away from **seat** and **back** as shown in **Fig. 6**. Locate “U” shaped chair frame crossmember. Note **TOP** dimple at mounting hole. Ensure **TOP** dimple faces away from **Chair Frame Arms** as shown in **Fig. 7**. Slip crimped ends of each **Chair Frame Arm** into **chair frame crossmember**. Tap down until fully seated. Assemble **chair frame** as shown in **Fig. 7**. Insert **plastic end caps** as shown in **Fig. 6**.

Fig. 5

Fig. 6

Fig. 7



Step 4.

CAREFULLY place **seat** and **back** assembly into **chair frame**. Place **screws** with **washers** through mounting holes of **chair frame**. Align with mounting holes of chair **back** and place **plastic spacer** between **chair frame** and chair **back** as shown in **Fig. 6**. Locate **TWO side supports** as shown in **Fig. 8**. Place **side supports** over screws at back of chair **back** and ensure **side supports** land **UNDER** rear crossmember as shown in **Fig. 9**. Secure with **washer** and **nut**. **DO NOT FULLY TIGHTEN**. **Side supports** meet at center mounting hole of **rear crossmember** as shown in **Fig. 10**. Align supports with mounting hole on **rear crossmember**. Place **screw** with **washer** through mounting holes and secure with **washer** and **nut**. **DO NOT TIGHTEN**.

Fig. 8



Fig. 9



Fig. 10



Move to front of assembly and place **screws** with **washers** partially through **chair frame**. Align with mounting holes of **chair seat** and place **plastic spacer** between **chair frame** and **chair seat**. Push screw through fully. Secure with **washers** and **nuts**. **TIGHTEN ALL SCREWS AND NUTS**. Set assembly aside.

Step 5.

Return to **main frame** assembly. Locate **FOUR** **swing arms** as shown in **Fig. 11**. **Swing arms** are mounted with screws, **SMALL** washer, **LARGE** washer on **BOTH SIDES OF BUSHING** and secured with **washer** and **nut** as shown in **Fig. 12**. **NOTE: SWING ARMS HAVE SLIGHT BEND ON EACH END.**

Fig. 11

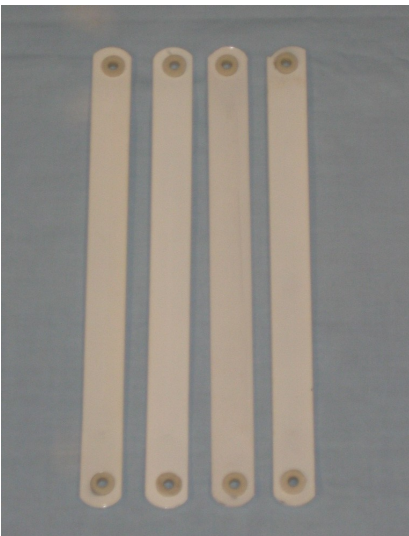
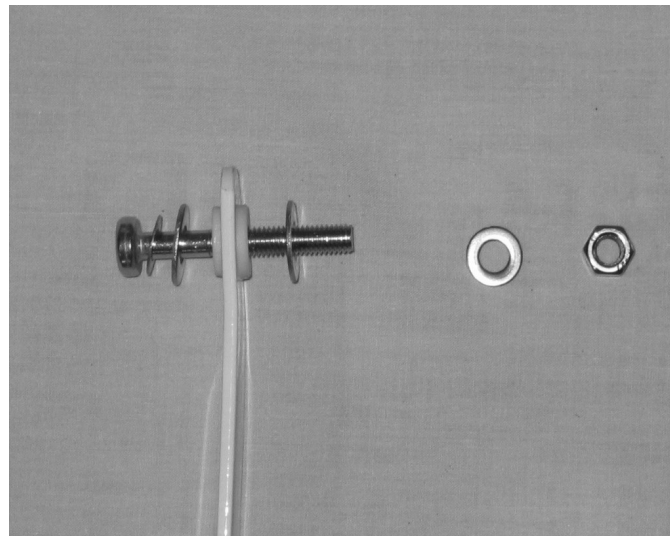


Fig. 12



When **swing arms** are attached to **main frame** they **MUST** be in **CORRECT** position facing **AWAY** from main frame as shown in **Fig. 13 WHEN SCREWS ARE TIGHTENED.**

Swing arms are shown **INCORRECTLY** attached in **Fig. 14.**

THREADS OF SCREWS MUST BE ON OUTSIDE OF MAIN FRAME. Place all **swing arms** onto **main frame** and **TIGHTEN NUT UNTIL RESISTANCE IS FELT.** **Swing arms** should move freely **BUT** have some resistance to their movement. Place protective **Acorn Nut** as shown in **Fig. 15.** and tighten.

Fig. 13

CORRECT

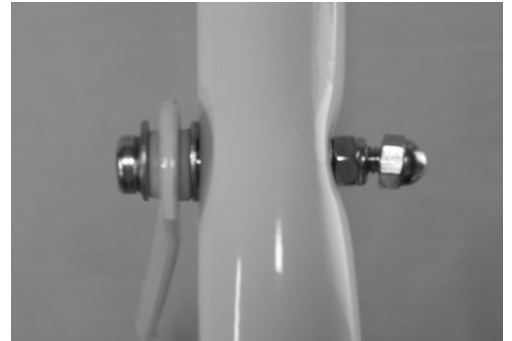


Fig. 14

INCORRECT



Fig. 15



Step 6

CAREFULLY place **seat and back chair** assembly into **main frame**. **Swing arms** attach to bottom frame of **seat and back chair** assembly. Arrange hardware as follows: **screw, small washer, large washer, swing arm, large washer** as in **Fig. 16.** Slightly raise **seat and back chair** assembly and push remaining threads of screw through mounting hole of **seat and back chair** assembly. Secure with **washers** and **nuts**. Tighten until resistance is felt. Attach all **swing arms** in same fashion. This completes glider assembly. Refer back to 1st page for picture.

Fig. 16

